



# **RANGER™**

**Body Scanner/Metal Detector**

***Owner's Manual***

## **IMPORTANT**

Read and understand instruction booklet before using scanner.  
Always test scanner for proper operation before each use.





## INTRODUCTION

---

Your Ranger Body Scanner/Metal Detector is ideal for use at airports, industrial sites, government buildings, schools, hospitals, meetings, athletic events, or anywhere you need added security without undue inconvenience to anyone entering the area. It's sensitive enough to detect metal objects the size of a 25-cent piece, so you can use it for special applications, such as locating a listening device in a room. The Body Scanner sounds a high-pitched tone whenever it detects metal—a longer tone for larger objects, and a shorter one for smaller objects.

You can use a rechargeable nickel-cadmium battery for power, and recharge it in the Body Scanner.

Its features include:

**Red LED Indicator** lights when the Body Scanner detects metal.

**De-Sense Button** reduces the Body Scanner's sensitivity to metal by about 50 percent, so you can scan near floors which contain large amounts of steel reinforcement, or only scan for larger objects.

**Earphone Jack** lets you connect an optional earphone to the security wand so you can scan in privacy.





## TABLE OF CONTENTS

|   |           |
|---|-----------|
| <b>A LOOK AT YOUR RANGER BODY SCANNER .....</b>       | <b>4</b>  |
| <b>POWERING THE BODY SCANNER/METAL DETECTOR .....</b> | <b>6</b>  |
| Installing the Battery .....                          | 6         |
| Charging a Nickel-Cadmium Battery .....               | 8         |
| <b>OPERATION .....</b>                                | <b>10</b> |
| Turning the Body Scanner On and Off .....             | 10        |
| Testing the Body Scanner .....                        | 10        |
| Body Scanning .....                                   | 11        |
| Adjusting the Body Scanner's Sensitivity .....        | 12        |
| Using an Earphone .....                               | 13        |
| <b>MAINTENANCE .....</b>                              | <b>14</b> |
| <b>SPECIFICATIONS .....</b>                           | <b>15</b> |



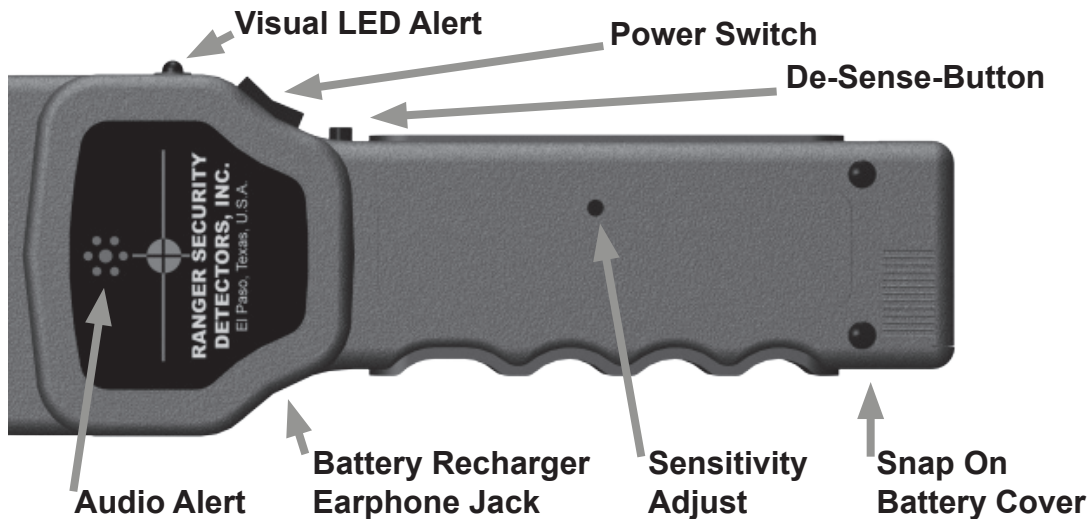


## *A LOOK AT YOUR BODY SCANNER*

---

Scan Area







## ***POWERING THE BODY SCANNER***

---

### ***INSTALLING THE BATTERY***

Your Ranger Body Scanner/Metal Detector requires one 9V battery for power. We recommend using an alkaline battery. You can also use a rechargeable nickel-cadmium battery with a proper AC adapter.

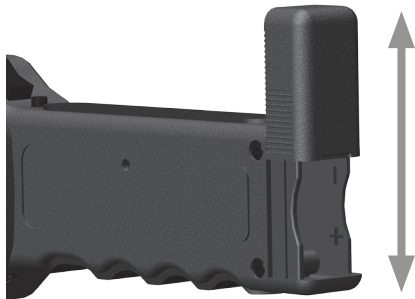
#### **Notes:**

- If you use a rechargeable nickel-cadmium battery, you must charge it before operating the security wand. See "Charging a Nickel-Cadmium Battery."
- If your Body Scanner requires continuous use, you might consider keeping a spare nickel-cadmium battery charged.
- Use only a fresh battery of the required size and type.
- Never leave a dead or weak battery in the Body Scanner.
- If you do not plan to use the Body Scanner for several days, remove the battery.





1. Follow these steps to install the battery:
2. Grip the snap on battery cover and pull back to slide open the battery compartment.
3. Remove the old battery from the battery compartment.
4. Place a new battery into the battery compartment. Check for proper + positive and - negative polarity battery positioning. Polarity marks are located inside the battery compartment.



When the battery starts to get low, the Body Scanner makes a "chirping" sound instead of a smooth steady sound, and the indicator blinks on and off rapidly when it detects metal. Replace the battery, or recharge it if you inserted a rechargeable nickel-cadmium battery (see "Charging a Nickel-Cadmium Battery").





## **CHARGING A NICKEL-CADMIUM BATTERY**

---

You must charge a rechargeable nickel-cadmium battery before you can use it to power the security wand. To charge it in the security wand, you need an AC adapter. AC adapters are available from Ranger Security.

**Warning:** Do not try to recharge alkaline or other non-rechargeable batteries. They might explode.

**Caution:** The AC adapter must supply 12 volts DC, its center tip must be set to positive, it must deliver at least 10 milliamps, and its plug must correctly fit the security wand's recharger/earphone jack. The recommended Radio Shack AC adapter meets these requirements. Using an AC adapter that does not meet these requirements could damage the security wand or the AC adapter.

**Important:** Your Body Scanner is capable of using a rechargeable nickel-cadmium battery. At the end of the battery's useful life, it must be recycled or disposed of properly. Contact your local, county or state hazardous waste management authorities for information on recycling or disposal programs in your area. Some options that might be available are municipal curbside collection, drop-off boxes at retailers, recycling collection centers, and mail-back programs.





1. Set **ON/OFF** to **OFF** and install the battery in the Body Scanner.
2. Insert the AC adapter's plug into the Body Scanner's recharger/earphone jack, on the side of the wand.
3. Plug the AC adapter's other end into a standard AC outlet.
4. Charge the battery for 14 to 16 hours.
5. Unplug the AC adapter from the AC outlet first. Then unplug it from the charging jack.



**Note:** Let the nickel-cadmium battery fully discharge once in a while before you recharge it.





## OPERATION

### TURNING THE BODY SCANNER ON AND OFF

Set **ON/OFF** to **ON** to turn the Body Scanner on, or to **OFF** to turn it off.

To conserve battery life, always make sure the Body Scanner is off when not in use.

### TESTING THE BODY SCANNER

The Body Scanner sounds a high-pitched tone whenever it detects metal — a longer tone for larger objects, and a shorter one for smaller objects.

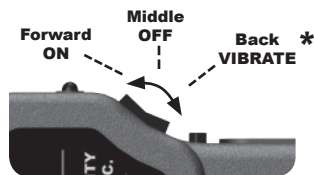
Before using the Body Scanner, always test it by turning it on and scanning a small metal object (such as a quarter) to make sure the tone sounds and the indicator lights.

**\* Silent Alarm Vibration Mode is a feature exclusive to Model 1500, please note that Model 1000 does not have Silent Alarm Vibration. Mode**

*ON/OFF is located on the top side of the Security Wand for easy thumb access.*



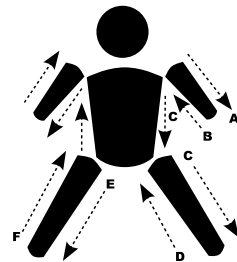
### ROCKER SWITCH MODES





## BODY SCANNING

1. Ask the person to face you with their arms and legs slightly extended.
2. Using a smooth, even speed, begin the body scan at the upper left shoulder, holding the Body Scanner's flat surface to the person's profile, about one inch from their body.
3. Using a smooth, even motion, scan:
  - a. Down the length of one arm
  - b. Back up underneath the arm
  - c. Down the full body length to the feet.
  - d. Up the inner leg from the ankle
  - e. Back down the inner leg to the opposite ankle.
  - f. Up the other side of the body, and over the arm.
4. Scan the front torso, including the shoulder area.
5. Scan the back torso, including the small of the back at the belt area.



*De-Sense is located on top of the handle.*

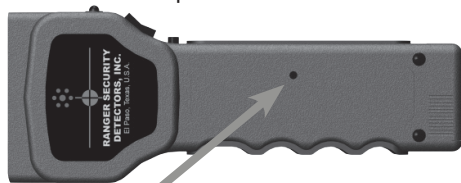


## ADJUSTING THE BODY SCANNER'S SENSITIVITY

Your Body Scanner is set to the optimum sensitivity level for most security screening applications. You can adjust the sensitivity level for specialized applications which require more or less sensitivity.

1. Insert the tip of a small screwdriver through the 1/8-inch hole in the handle until it touches the adjustment control inside
2. Turn the screwdriver slowly until its tip fits in the control's slot..
3. Using a test object, adjust the control for the desired sensitivity — clockwise to increase or counterclockwise to decrease sensitivity

**Note:** The further you move the control, the greater the change in sensitivity.



The sensitivity control trimpot is located on the scanner's handle.



TURN CLOCKWISE  
TO INCREASE  
SENSITIVITY



TURN COUNTER  
CLOCKWISE TO  
DECREASE SENSITIVITY

## USING AN EARPHONE

You can use your Body Scanner with an earphone that has 1/8-inch plug so you can hear the alarm through the earphones. Insert the earphone's plug into the Body Scanner's recharger/earphone jack on the bottom of the wand. The external sound cuts off automatically.



The headphone jack is located on the underside of the body scanner directly opposite the **ON/OFF** switch.



## MAINTENANCE

---

The following suggestions will help you care for the Body Scanner so you can enjoy it for years.

- Keep the Body Scanner dry. If it gets wet, wipe it dry immediately. Liquids can contain minerals that can corrode the electronic circuits.
- Handle the Body Scanner gently and carefully. Dropping it can damage the circuit boards and case and can cause the Body Scanner to work improperly.
- Use and store the Body Scanner only in normal temperature environments. Temperature extremes can shorten the life of electronic devices and distort or melt plastic parts
- Keep the Body Scanner away from dust and dirt, which can cause premature wear of parts.
- Wipe the Body Scanner with a damp cloth occasionally to keep it looking new. Do not use harsh chemicals, cleaning solvents, or strong detergents to clean the security wand.

Modifying or tampering with the Body Scanner's internal parts can cause a malfunction and might invalidate your Body Scanner's warranty. If your Body Scanner is not operating as it should, send it to the address on the back of this manual along with your proof-of-purchase.





## SPECIFICATIONS

---

**Operating Frequency** ..... 13 kHz.

---

**Weight** ..... 14 oz.

---

**Dimensions** ..... 3 x 15<sup>3</sup>/<sub>4</sub> x 1<sup>3</sup>/<sub>8</sub> Inches (HWD)

---

**Tuning** ..... Automatic

---

**Alert** ..... Audio, LED Light

---

Specifications are typical; individual units might vary. Specifications are subject to change and improvement without notice





Limited  
*2 Year Warranty*

Ranger Security Detectors, Inc. RANGER Hand-Held Body Scanner is warranted against defects in workmanship or materials under normal use for 2 years from date of purchase to the original user. Liability in all events is limited to the purchase price paid. Liability under the aforesaid warranty is limited to replacing or repairing at our option any RANGER Hand-Held Body Scanner returned, shipping cost prepaid, to Ranger Security Detectors, Inc.

**RANGER SECURITY  
DETECTORS, Inc.**

11900 MONTANA AVENUE. • EL PASO, TEXAS 79936 • TEL. (915) 590-4441

